

# AMOS2

Enterprise Management

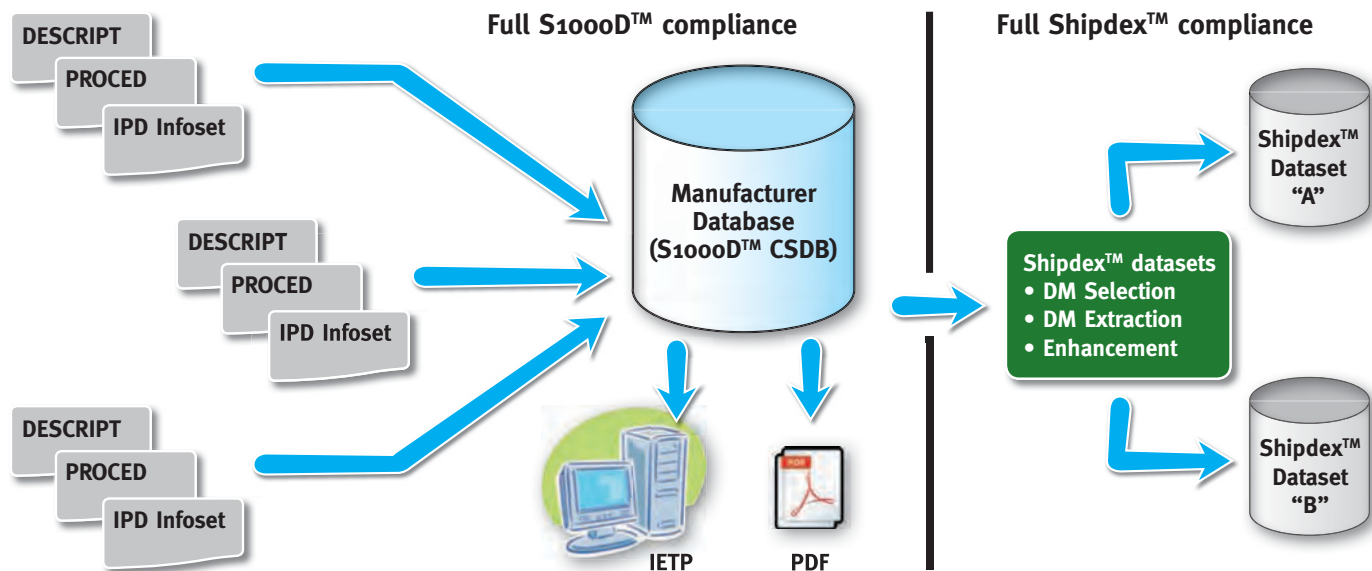


## AMOS SHIPDEX SUITE

Data where it matters



■ The Shipdex™ dataset production



Shipdex™ is the International Business Rules (The Shipdex™ Protocol) developed to standardise the production and the exchange of technical and logistic data within the shipping community. The Shipdex™ Protocol applies to S1000D™ at issue 2.3

## Scope

The Shipdex™ Protocol handles technical data exchange for all sea projects to ensure that data is exchanged in a neutral and standardised format; ie. It can be easily implemented on different Information Technology systems.

The Shipdex™ Protocol provides the end user with essential, complete and non-redundant technical information which is strictly linked to logistic studies or equivalent analysis and related maintenance strategies.

Information produced in accordance with the Shipdex™ Protocol is achieved in a modular form, called a “Data Module”, which is defined as “the smallest self contained information unit within a Shipdex™ data set”.

The Shipdex™ Protocol defines data modules as containers for data exchange.

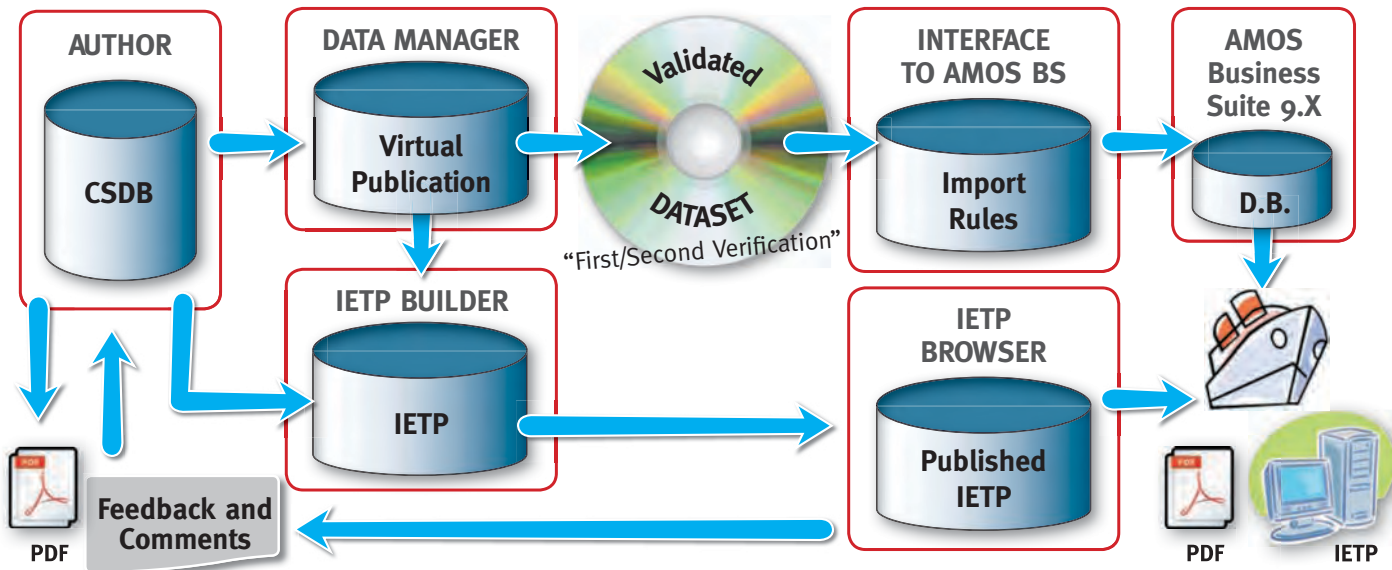
The data module types that the Shipdex™ Protocol makes use of are:

- **Descriptive**, for descriptive and operational information
- **Procedural**, for maintenance information
- **Illustrated Parts Data (IPD)**, for catalogues



All data modules that are applicable to the Product may be gathered and managed in a database, which is referred to as the Common Source Data Base (CSDB). Although information is not duplicated in the CSDB, individual data modules can be reused many times in the output. Savings are therefore made in the maintenance of the data in that it only needs to be changed once, while the modified information appears throughout the output.

## The AMOS Shipdex Suite Scenario



### Overview

SpecTec has been involved in the development of the Shipdex™ Protocol and is a Founder member of the “Shipdex™ Protocol Working Group” and the “Shipdex™ Protocol Steering Committee (SPSC)”.

SpecTec acts as Technical Manager within the “Shipdex™ Protocol Maintenance Group (SPMG)”.

**The new AMOS Shipdex Suite, developed by SpecTec, is the most effective tool on the market for the production, management, use and valorisation of technical information developed in accordance with the Shipdex™ Protocol.**

AMOS Shipdex Suite is composed of the following modules that can be installed and activated separately and at different times:

- **AMOS Shipdex Author \***, to produce Shipdex™ datasets and store them inside a Common Source Data Base (CSDB).
- **AMOS Shipdex Data Manager \***, to validate a Shipdex™ dataset against S1000D™ and Shipdex™ rules, Shipdex™ standard tables, etc.
- **AMOS Shipdex IETP Builder \***, to create an Interactive Electronic Technical Publication (IETP) from a Virtual

#### \* Powered by Corena

CORENA is one of the world’s foremost suppliers of Commercial-Off-The-Shelf products managing the production, publishing, distribution, and use of technical documentation for complex equipment. CORENA’s products are widely used, primarily by customers within the Aerospace and Defence industry utilising recognised international standards like ATA iSpec 2200 and ASD/AIA S1000D.

Publication or from the Author CSDB and to create a PDF Technical Publication for printing.

- **AMOS Shipdex IETP browser \***, to allow for search, navigation and viewing features through IETP and printing capabilities.
- **AMOS Shipdex Interface**, to import validated Shipdex™ datasets into the AMOS Business Suite database.

### Benefits

An integrated suite of software tools:

- To produce and manage your technical information in accordance with S1000D™ and the Shipdex™ Protocol (mostly addressed to manufacturers).
- To validate and exchange complete Shipdex™ datasets (addressed to all shipping actors).
- To publish and print Shipdex™ Publications (addressed to all shipping actors).
- To automatically create and update the AMOS Business Suite database (addressed to AMOS BS users).

All AMOS Shipdex Suite software tools with the exception of AMOS Shipdex Interface are completely independent of the CMMS or ERP in operation by the end users.



# AMOS SHIPDEX SUITE

Data where it matters



## AMOS Shipdex Author

AMOS Shipdex Author is a ready to use, Commercial-Off-The-Shelf (COTS) product providing you with what you need to manage your technical publication projects inside a CSDB in accordance with the Shipdex™ specification.

It includes user management and access control, work-flow, authoring of data modules, generation of publishing modules, and publishing and delivery management.

It has a built-in PDF publishing engine with ready made style sheets that handles preview of single data modules, as well as book publishing.

It also allows for storage and management of Shipdex™ comments (ie. feedback from the end users) created and sent by the AMOS Shipdex IETP Browser into the CSDB.

The product consists of a Shipdex Author server installation, and one or more Shipdex Author clients.

## AMOS Shipdex Data Manager

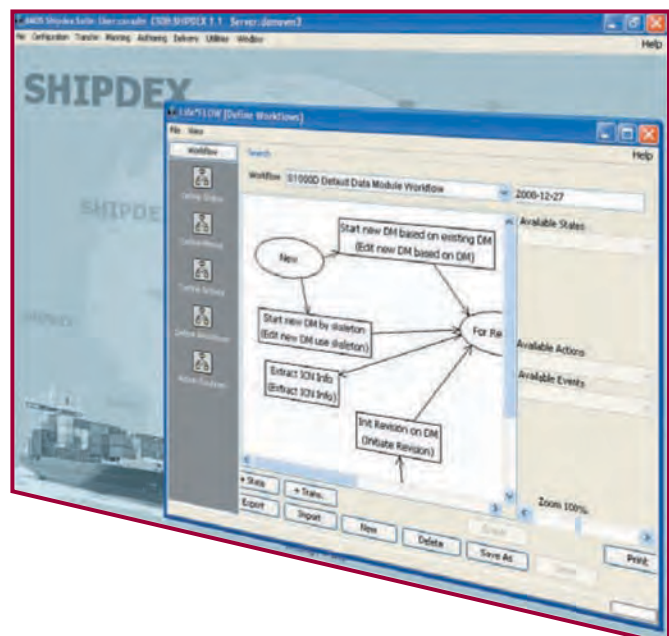
AMOS Shipdex data manager is a ready to use, Commercial-Off-The-Shelf (COTS) product enabling you to validate a Shipdex™ dataset against:

- Data Module List
- S1000D™ and Shipdex™ rules
- Shipdex™ Standard tables

It is also possible to enhance the Shipdex™ dataset with the Ship/Port configuration data and apply the First/Second verification for QA purposes.

It has a feature to build a Virtual Publication that allows basic browsing, viewing and printing features through a Shipdex™ dataset.

AMOS Shipdex Data Manager is independent of the Author tools used to build a Shipdex™ dataset and the CMMS used for the management of maintenance and spare parts processes.





# AMOS SHIPDEX SUITE

Data where it matters



## AMOS Shipdex IETP Builder and AMOS Shipdex IETP Browser

AMOS Shipdex IETP Builder is a ready to use, Commercial-Off-The-Shelf (COTS) product module that can be used together with the AMOS Shipdex Author and with the AMOS Shipdex Data Manager. It allows you to build an Interactive Electronic Technical Publication (IETP) that can be accessed and viewed, using AMOS Shipdex IETP Browser, either over the Intranet or by deploying it locally on individual machines.

AMOS Shipdex IETP Browser also allows for the creation of Shipdex™ comments (feedback from the end users) to be sent to the Manufacturer CSDB.

It is delivered with ready made style sheets for Shipdex.

## AMOS Shipdex Interface

AMOS Shipdex Interface is a ready to use, Commercial-Off-The-Shelf (COTS) product module that can be used to import a validated Shipdex™ dataset into the AMOS Business Suite database.

Consequently AMOS Data Manager uses the data supplied by manufacturers in accordance with the Shipdex™ Protocol to automatically populate the AMOS database necessary for the management of maintenance processes and spare parts.

This approach will save the time consuming and error prone process of manual database production.

Furthermore, it will be possible to update the AMOS Business Suite database on the basis of the Shipdex™ Service Bulletin and Service letters.

